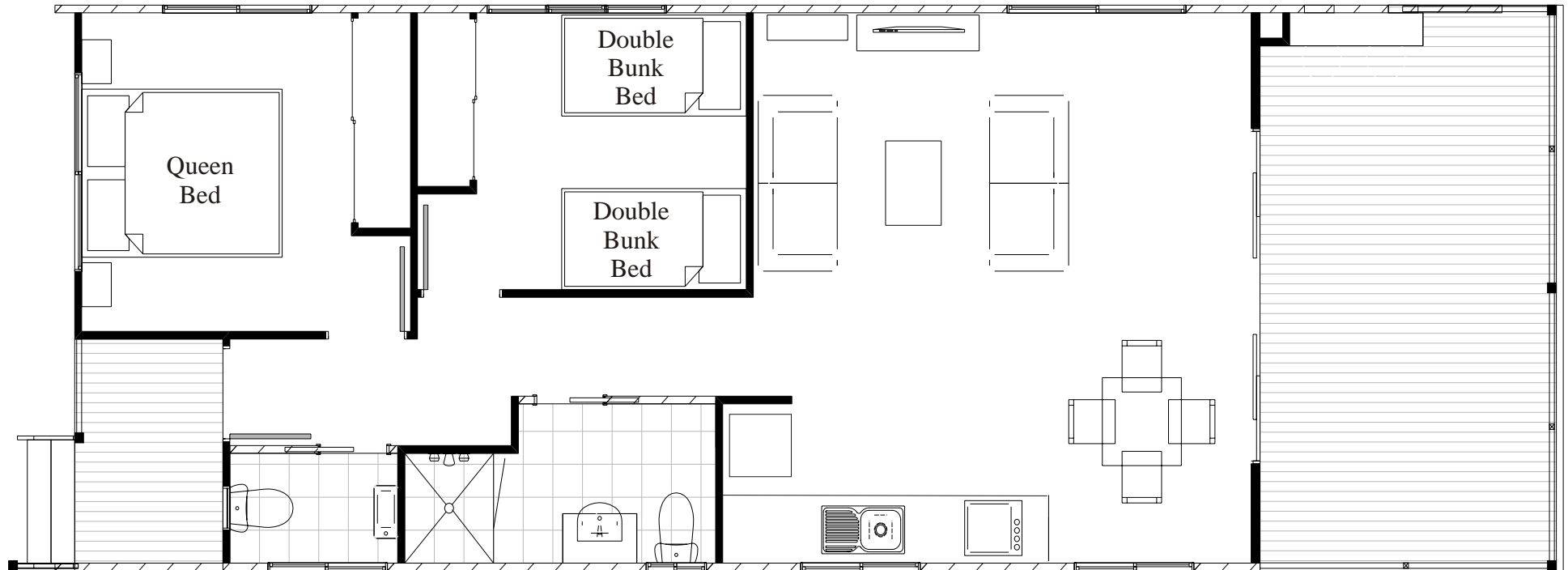




# KINGSCLIFF BEACH HOLIDAY PARK

## Ocean Cabin 2 B/rm Floor Plan

Queen Bed & 2 Double Bunk Beds



### CABIN FEATURES:

- \* CAN ACCOMMODATE UP TO 6 ADULTS
- \* BEDROOM 1 - 1 QUEEN BED
- \* BEDROOM 2 - 2 DOUBLE BUNK
- \* LOUNGE - WITH A FLAT SCREEN LCD TV
- \* AIR CONDITIONING
- \* BATHROOM - SHOWER AND TOILET & SEPARATE TOILET
- \* KITCHEN - FULLY-EQUIPPED
- \* DISHWASHER, FULL-SIZED FRIDGE
- \* TEA AND COFFEE MAKING FACILITIES
- \* LINEN INCLUDED